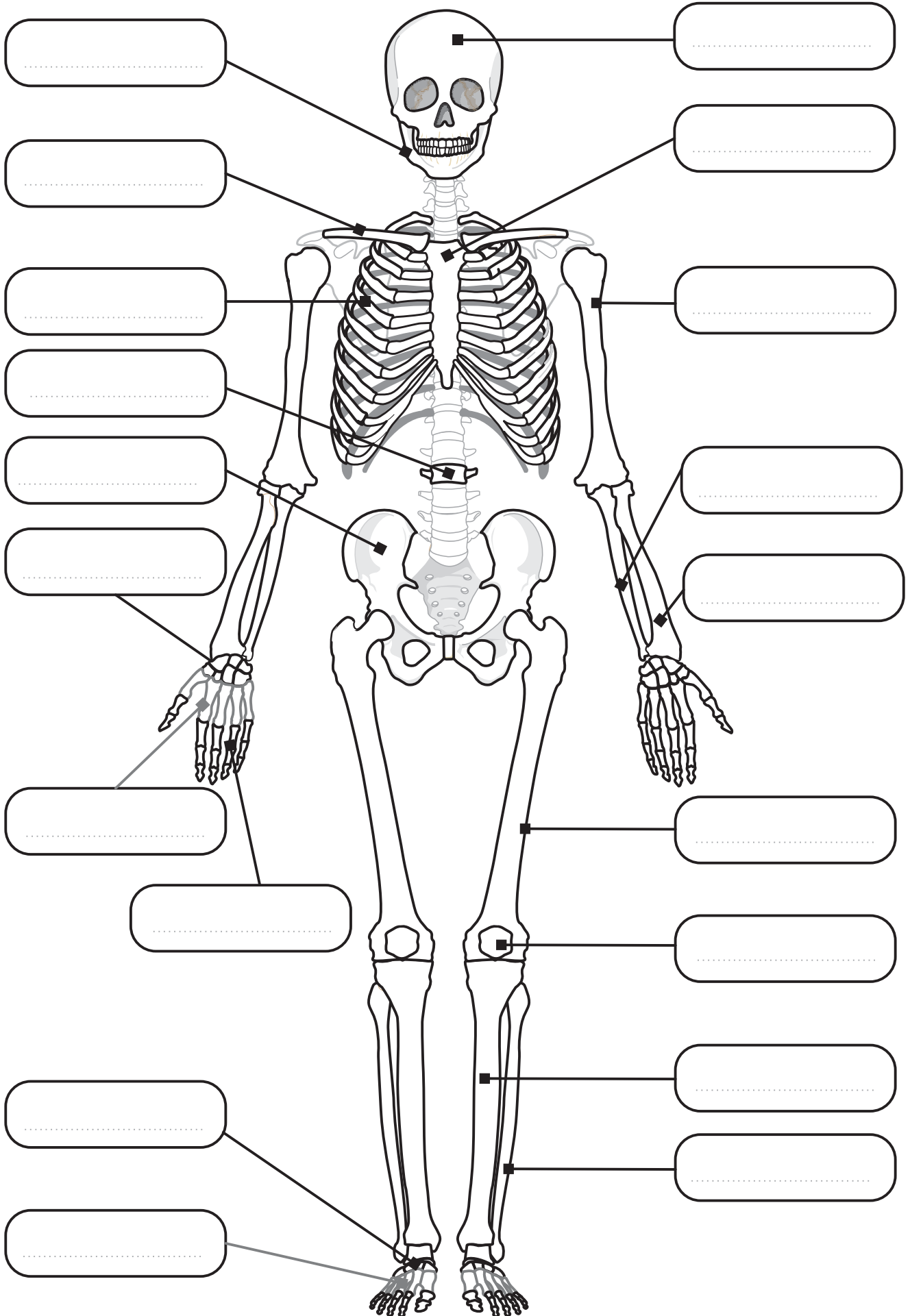


Name Date

Label the bones: ribs, skull, jaw, vertebra, humerus, clavicle, ulna, radius, hand bones (carpals, metacarpals, phalanges), femur, pelvis, patella, tibia, fibula, foot bones (tarsals, metatarsals).





Name Date

Label the bones:

skull, jaw, ribs, vertebra, humerus, ulna, radius, pelvis, femur, tibia, fibula,

